

HDL-MPR0210/TILE.48
 Tile Series Power Interface-With 2CH 10A Relay
 HDL-MPR0310/TILE.48
 Tile Series Power Interface-With 3CH 10A Relay

buspro

Datasheet

Issued: September 29, 2020
 File Edition: A

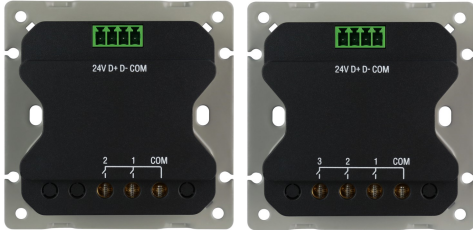


Figure 1. HDL-MPR0210/TILE.48 Figure 2. HDL-MPR0310/TILE.48

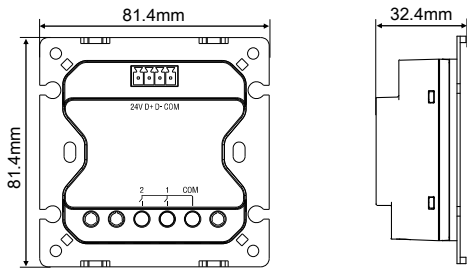


Figure 3. Dimensions - Back View Figure 4. Dimensions - Side View
 Tile Series Power Interface-With 2CH 10A Relay

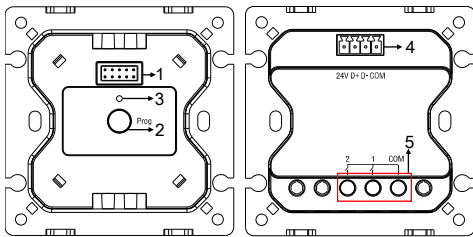


Figure 5. Components - Front View Figure 6. Components - Back View
 Tile Series Power Interface-With 2CH 10A Relay

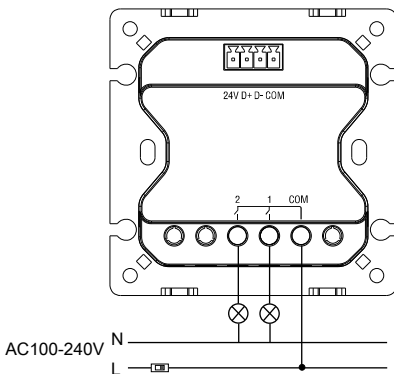


Figure 7. Wiring

Take the connection of Power Interface-With 2CH 10A Relay as an example

Overview

Power Interface-With 2CH 10A Relay (See Figure 1-2) is a standard panel power interface with relay channels. The power interface has an independent device ID address, including 2/3 10A relay channels, and adopts HDL Buspro protocol 485 Bus communication. The relay channels can be switched on and off through the device ID address, and it can also be used as a power interface for Tile series panel. In conjunction with Tile series panel installed on the 86 wall box, it can realize the intelligent control of household lighting, curtains, fans, sockets and other electrical equipment.

Its main functions include:

- With 2/3-channel 10A magnetic latching relay channel
- With independent programming button and programming indicator
- Short press the programming button to realize all relay channels on/off
- Provide power and communication interface for HDL Tile series panel

Components and Operation

Dimensions - See Figure 3 - 4

Components - See Figure 5 - 6

Wiring - See Figure 7

1. Communication interface: provide working voltage and communication signal.
2. Programming button: short press the programming button to realize all relay channels on/off
3. Programming indicator
4. HDL Buspro interface
5. Connection terminal of relay channels

Installation

Installation - See Figure 8

- Step 1. Mount the wall box (86 wall box with depth not less than 50mm) in the wall and draw the AC power cable and Buspro cable.
- Step 2. Make correct wiring for AC power cable and Buspro cable.
- Step 3. Fix the power interface in the wall box with screws.
- Step 4. Install the panel cover on the power interface.
- Step 5. Install the frame around the panel.

Note(s)

- Buspro cable - CAT5E or HDL dedicated Buspro cable
- Buspro connection - Hand-in-hand recommended
- Installation - Wall box (with the recommended depth not less than 50mm)
- Please ensure correct wiring and connection
- To protect the device and loads, it is recommended to connect a 10A circuit breaker to each channel.
- Please use the actuator according to technical data.



Safety Precautions

- The installation and commissioning of the device must be carried out by HDL or the organization designated by HDL. For planning and construction of electric installations, the relevant guidelines, regulations and standards of the respective country are to be considered.
- HDL does not take responsibility for all the consequences caused by installation and wire connection that are not in accordance with this document.
- Please do not privately disassemble the device or change components, otherwise it may cause mechanical failure, electric shock, fire or body injury.
- Please resort to our customer service department or designated agencies for maintenance service. The warranty is not applicable for the product fault caused by private disassembly.

Package Contents

Tile Series Power Interface-With 2(3)CH 10A Relay*1 / Buspro connector*1 / Long screw*2 / Short screw*2 / Datasheet*1

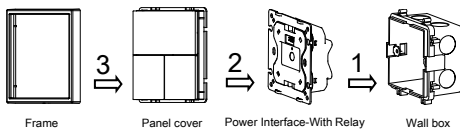


Figure 8. Installation

Technical Data

Basic Parameters

Working voltage	15-30V DC
Working current	24mA/24V DC
Input voltage	AC100-240V (50/60Hz)
Output channel	HDL-MPR0210/TILE.48: 2CH, 10A/CH HDL-MPR0310/TILE.48: 3CH, 10A/CH
Communication	HDL Buspro
Cable diameter of Buspro terminal	0.6-0.8mm

External Environment

Working temperature	-5°C~45°C
Working relative humidity	≤90%
Storage temperature	-20°C~60°C
Storage relative humidity	≤93%

Specifications

Dimensions	81.4mm×81.4mm×32.4mm
Net weight	99g
Housing material	Iron, PC
Installation	Wall box (Figure 8)
Protection rating (Compliant with EN 60529)	IP20

Name and Content of Hazardous Substances in Products

Components	Hazardous substances					
	Lead (Pb)	Mercury (Hg)	Cadmium (Cd)	Chromium VI (Cr (VI))	Poly-brominated biphenyls (PBB)	Poly-brominated diphenyl ethers (PBDE)
Plastic	o	o	o	o	o	o
Hardware	o	o	o	o	-	-
Screw	o	o	o	x	-	-
Solder	x	o	o	o	-	-
PCB	x	o	o	o	o	o
IC	o	o	o	o	x	x

The symbol "-" indicates that the hazardous substance is not contained.

The symbol "o" indicates that the content of the hazardous substances in all the homogeneous materials of the component is below the limit requirement specified in the Standard IEC62321-2015.

The symbol "x" indicates that the content of the hazardous substance in at least one of the homogeneous materials of the part exceeds the limit requirement specified in the Standard IEC62321-2015.

HDL Buspro Cable Guide

HDL Buspro	HDL Buspro Cable	CAT5/CAT5E
DATA+	Yellow	Blue/Green
DATA-	White	Blue white/Green white
COM	Black	Brown white/Orange white
24V DC	Red	Brown/Orange

Technical support

E-mail: hdtickets@hdlautomation.com
Website: <https://www.hdlautomation.com>

©Copyright by HDL Automation Co., Ltd. All rights reserved.
Specifications subject to change without notice.