



Buspro Blinds Motor User Manual

(Applicable model: MVSM35B.20)

Version: V1.0.0

Published on Jan.18, 2020

Content

Legal Statement	I
Update History	II
1 Introduction.....	1
2 Buspro Software Setting	2
3 Panel Setting	4
3.1 Open Configuration Page	4
3.2 Curtain Control	5

Legal Statement

HDL has all the intellectual property rights to this document and contents thereof. Reproduction or distribution for third parties are prohibited without written authorization from HDL. Any infringement of HDL's intellectual property rights will be investigated the legal liability.

The contents of this document will be updated as the updates of product versions or other reasons. Unless otherwise agreed upon, this document is to be used as a guidance only. All the statements, information and recommendations in this document makes no warranty expressed or implied.

HDL Automation Co., Ltd.

Update History

The form below contains the information of every update. The latest version contains all the updates of all former versions.

No.	Version	Update Information	Date
1	V1.0.0	Initial release	Jan.18, 2020

1 Introduction

Buspro Blinds Motor (Model: MVSM35B.20, hereinafter referred to as motor) is specially designed for blinds, Roman blind, etc. It can open, close, percentage control and move curtain to a small/large extent. And the switch limiting position of curtain can be set by Buspro Setup Tool 2.

This user manual offers the information on the configuration of motor in Buspro Setup Tool 2 and Prism Pro/Multi-function Touch Panel. The following tools might be included:

- Prism Pro/Multi-function Touch Panel (Model: HDL-MPTFL11.46)
- Panel Power Interface (Model: HDL-MPLPI.46-A)
- Buspro Blinds Motor (Model: MVSM35B.20)
- A computer with Buspro Setup Tool 2
- 1-Port Programming Gate Way connected to the router
- Dedicated Buspro Cable(s)

Note:

- ① Please refer to the datasheet attached to the product for the information of installation, wiring, specifications, etc.
- ② The pictures in this user manual are for reference only and the actual product should prevail.
- ③ Panel button introduction is as shown in Figure 1-1 (The six buttons under the panel respectively correspond to the six icons of each button page).

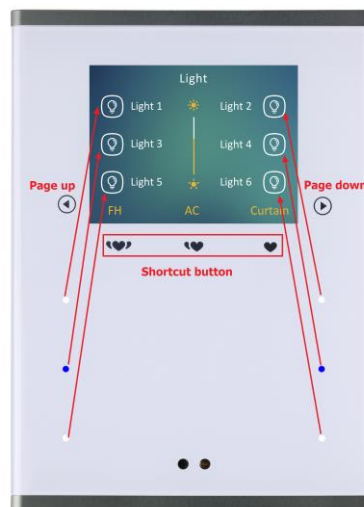


Figure 1-1 Panel button introduction

2 Buspro Software Setting

- ① Power on motor, connect motor to the system and open Buspro Setup Tool 2 in the computer.
- ② Click “Fast Search” to search for the devices connected to the system.
- ③ Double click the “Model” or “Description” column of motor to enter configuration page, as shown in Figure 2-1 and Figure 2-2.

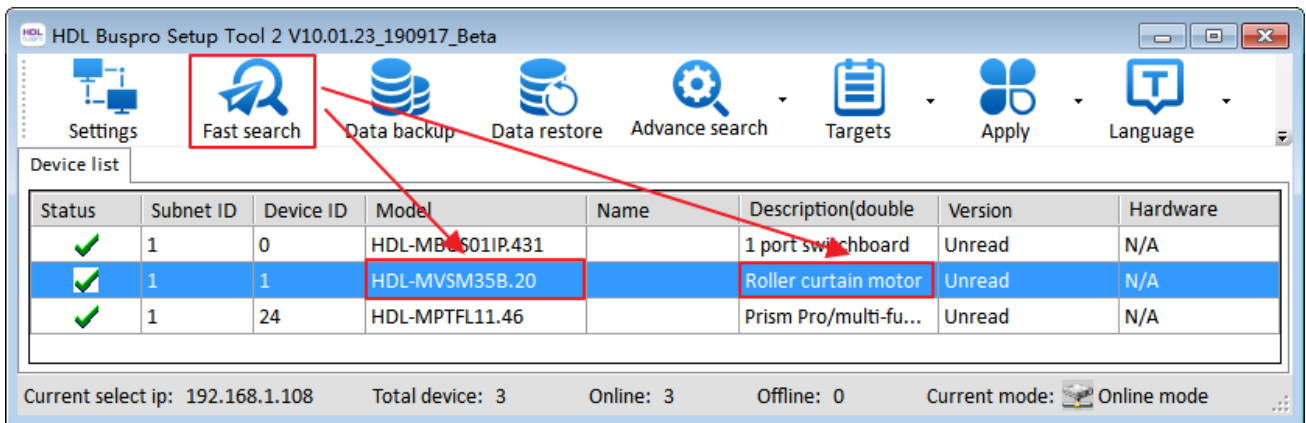


Figure 2-1 Open configuration page

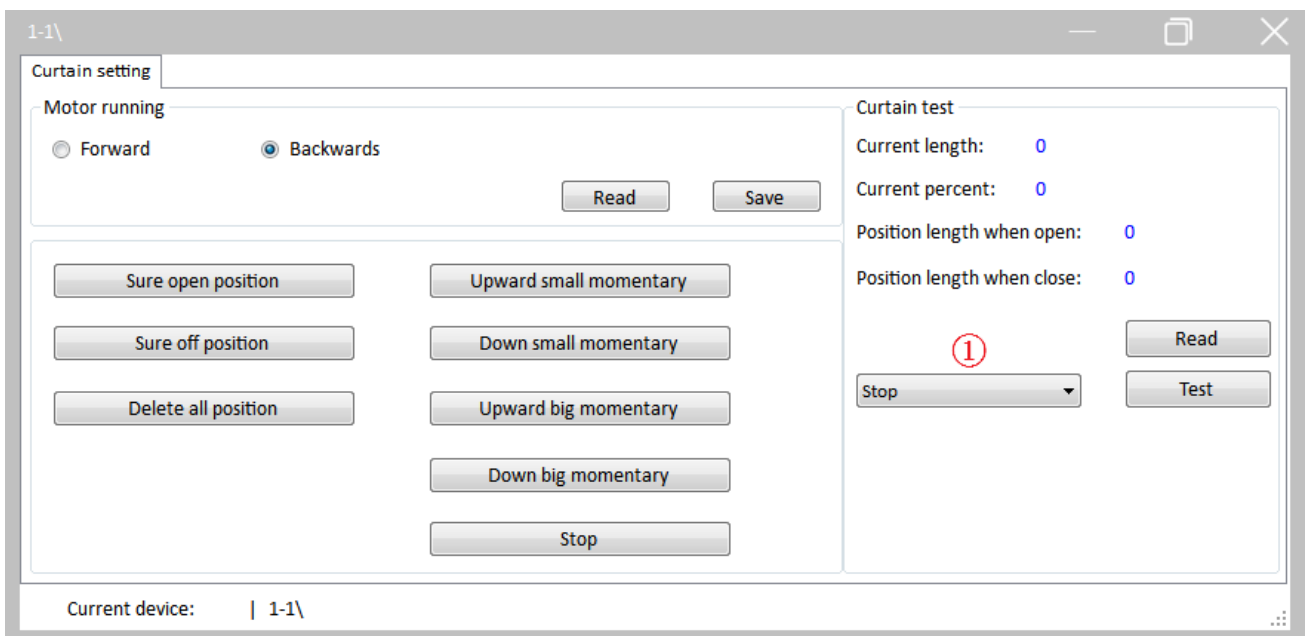


Figure 2-2 Motor configuration page

The setting items of motor configuration page are explained below:

1. Motor running: to set motor running direction to “Forward” or “Backwards”.
2. Drag start enable: select this option to start up motor by dragging.
3. Sure open/off position: to configure the switch limiting position of curtain.
 - Open position: if 20% is set to open limiting position (20% of the whole track), user can select 20% in the pull-down menu (mark ① of the page) and click “Test” button. When motor stops running, user should click “Sure open position” button to complete the configuration.
 - Off position: if 80% is set to close limiting position (80% of the whole track), user can select 80% in the pull-down menu (mark ① of the page) and click “Test” button. When the motor stops running, user should click “Sure off position” button to complete the configuration.
4. Delete all position
5. Upward/Down small momentary: to run the curtain upward/down to a small extent.
6. Upward/Down big momentary: to run the curtain upward/down to a large extent.
7. Stop: click to stop the curtain.
8. Read: click to read the current position of the curtain.
9. Test: after open/close/percentage is selected on the right (mark ① of the page), click test button. If the motor is configured correctly, the motor will run as expected.

3 Panel Setting

3.1 Open Configuration Page

- ① Connect the panel and motor to the system and open Buspro Setup Tool 2 in the computer.
- ② Click “Fast Search” to search for the devices connected to the system.
- ③ Double click the “Model” or “Description” column of the panel to enter configuration page, as shown in Figure 3-1 and Figure 3-2.

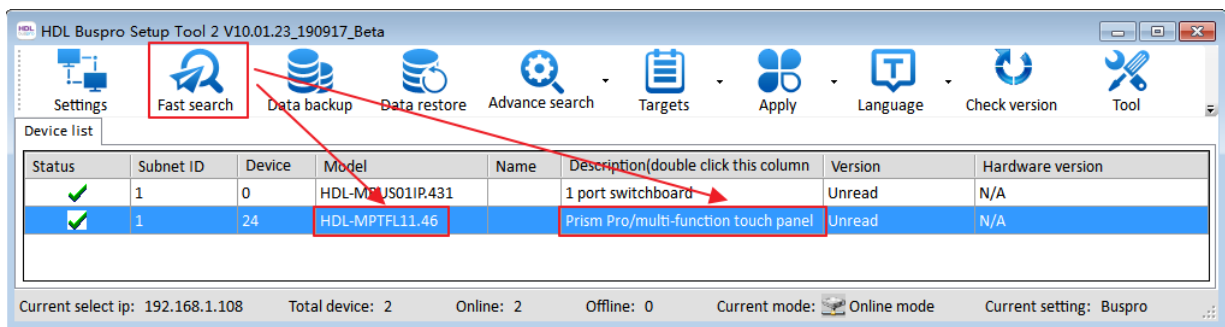


Figure 3-1 Open configuration page

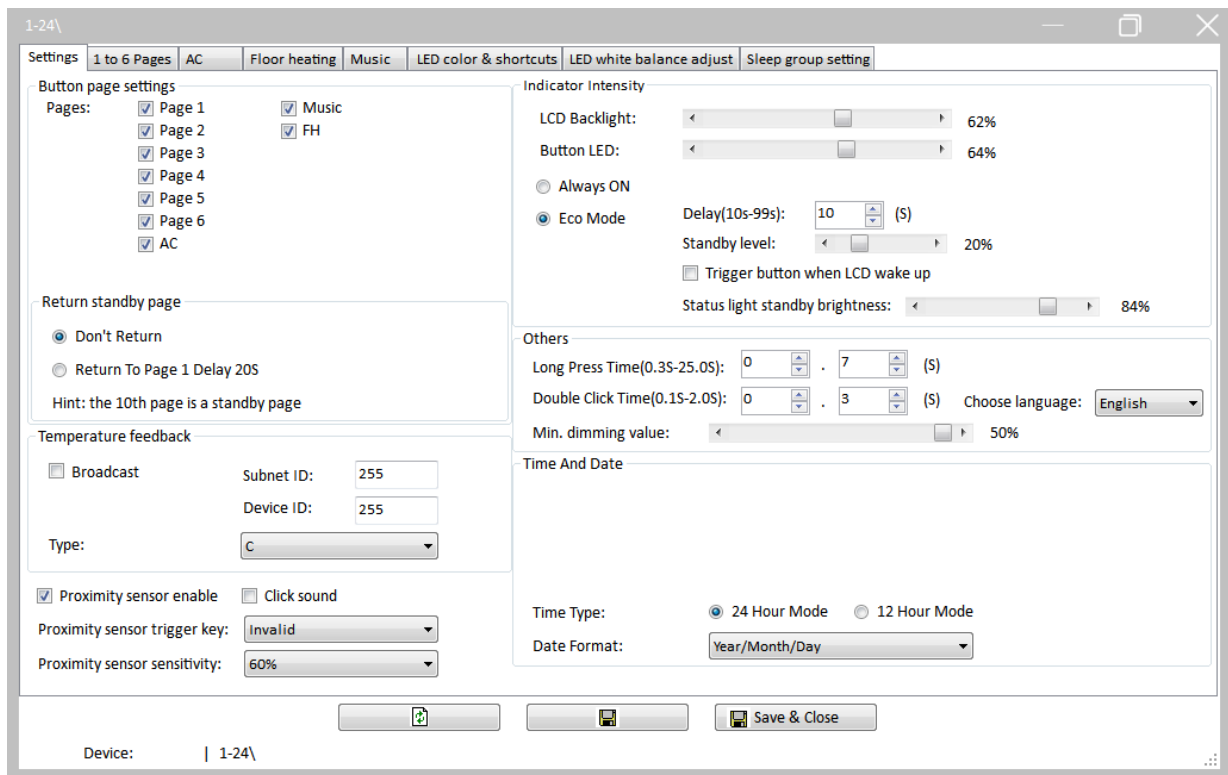


Figure 3-2 Panel configuration page

3.2 Curtain Control

As shown in Figure 3-3:

- ① Select “1 to 6 Pages” label in the panel configuration page and select buttons to be set at the top (Take button 1 of page 1 as an example).
- ② Select button mode: the number of objects depends on button mode. For example, “Combination ON”, “Combination OFF”, “Combination ON/OFF”, “Dbclick/Combined”, “Short/Long Press”, “Short Press/Long Jog” and “Clock” can control up to 99 objects, while “Single ON/OFF”, “Single ON” and “Single OFF” can only control 1 object.
- ③ Click “Targets setting” button on the right to open the page.
- ④ Click “Read” button.
- ⑤ Set target parameters:
 - Subnet/Device ID: enter the corresponding subnet/device ID of motor.
 - Type: select “Curtain Switch”.
 - Param 1: enter 1.
 - Param 2: when “Open” is selected, button 1 of page 1 can open the curtain. When “Close” or “Percentage” is selected, button 1 of page 1 can close or percentage control the curtain.

1-24\

Settings 1 to 6 Pages AC Floor heating Music LED color & shortcuts LED white balance adjust Sleep group setting

Page-1 Page-2 Page-3 Page-4 Page-5 Page-6 ① Current selected page: Page-1 Current selected button: 1 Mode: N/A

Hint: 1. Double click button id to test it;
2. Click the button id to read its commands, would stop reading if there are three continuous commands are invalid.

Button ID	Name	Mode	Index	Subnet ID	Device ID	Type	Param1	Param2
1		Single ON/OFF						
2		Single ON/OFF						
3		Single ON/OFF						
4		Single ON/OFF						
5		Single ON/OFF						
6		Single ON/OFF						

Targets

Button status

Targets setting ③

Targets Configuration

Basic Information

Subnet ID: 1 Device ID: 24 Name:

Current selected page: 1

Current selected button: 1

Button type: Single ON/OFF Button name:

Targets

Input target number:(1-1) From 1 To 1 Read Save Targets create

Index	Subnet ID	Device ID	Type	Param1	Param2	Param3	Param4
1	1	1	Curtain Switch	1	Open	N/A	N/A

Invalid
Scene
Sequence
Timer Switch
Universal Switch
Single Channel Control
Curtain Switch
GPRS Control
Panel Control
Broadcast Scene
Broadcast Channel
Security Module
Music Control
Universal Control
Link Page
Infrared Control
Logic Light Adjust
LCD & LED Sleep
Valid

⑤

Figure 3-3 Targets setting page