

Datasheet

Issued: April 7, 2019

Edition: V1.0.0



Figure 1. RF Intelligent Door Bell and Access Reader

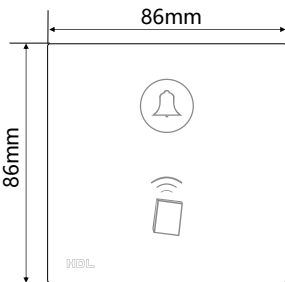


Figure 2. Dimensions - Front View

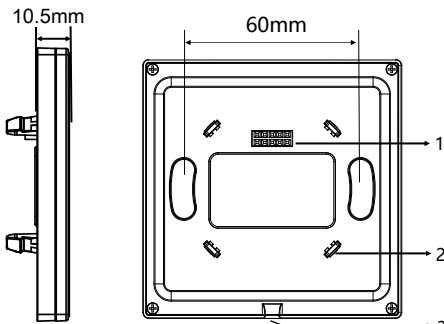


Figure 3. Dimensions - Front View Figure 4. Dimensions - Side View

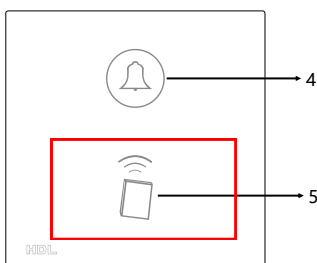


Figure 5. Front View

Overview

RF Intelligent Door Bell and Access Reader (See Figure 1) is a doorbell product with touch panel, which is the matching product of HDL control system. It is installed by the hotel room door and has the functions of doorbell and unlocking through swiping RF card.

Functions

- Optional backlight RGB colors
- Door bell for visitors
- Display requirement of cleaning room
- 1-99 targets can be controlled when user touch the door bell.
- 1-49 targets can be controlled when user swipe the card.
- The touch sensitivity can be adjusted.
- Supports upgrade from HDL Buspro

Important Notes

- The doorbell should be used in conjunction with the power interface.
- Buspro cable - CAT5E or dedicated HDL Buspro cable.
- Buspro connection - Series connection (hand-in-hand recommended).
- Installation - EU wall box.
- Touch performance - Touch panel sensitivity needs to be readjusted when it is installed.
- Images are for reference only, and the actual products should prevail.

Product Information

Dimensions - See Figure 2 - 4

Front view - See Figure 5

1. Communication interface
2. Fastener
3. Split gap
4. Doorbell button
5. Unlock by RF card

Door bell button: It can be used as doorbell, or for displaying the signal of DND or Need Cleaning. Different functions are distinguished by different colors.

Panels, or other devices that can trigger universal switch, can control various functions through sending universal switch numbers.

DND: Universal button is number 1. When it is DND status, Doorbell disabled

Cleaning: Universal button is number 2. When it is cleaning status, the doorbell can be controlled.

Doorbell: Universal button is number 5. When the status is on, the doorbell can be controlled.

Unlock by RF card: Universal button is number 6. When the status is on, you can unlock by RF card.

Notes: DND/Cleaning/Doorbell uses the same button.

RF card: The new card must be assigned by the hotel guest room management software. There are 5 types of cards: guest card, service card, cleaner card, maintenance staff card and manager card. When you use different cards, you can control different target scenes.

Product installation and disassembly

Installation - See Figure 6 - 8

- Step 1. Install the wall box in the wall.
- Step 2. Fix the power interface onto the wall box with screws.
- Step 3. Hold the edge of panel, and insert the panel in the slots of power interface vertically.

Disassembly - See Figure 9

- Step 1. Insert a straight screwdriver into the gap between the panel and power interface.
- Step 2. Hold the panel, pry up the panel gently and take down the panel.

Safety Precautions

- The installation and commissioning of the device must be carried out by HDL or the organization designated by HDL. For planning and construction of electric installations, the relevant guidelines, regulations and standards of the respective country are to be considered.
- The device should be installed in wall box. HDL does not take responsibility for all the consequences caused by installation and wire connection that are not in accordance with this document.
- Please do not privately disassemble the device or change components, otherwise it may cause mechanical failure, electric shock, fire or body injury.
- Please resort to our customer service department or designated agencies for maintenance service. The warranty is not applicable for the product fault caused by private disassembly.

Package Contents

HDL-MPTB01RF.48*1 / Datasheet*1

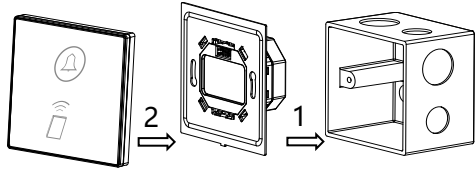


Figure 8. Door Bell Figure 7. Power interface Figure 6. Wall box
Figure 6 – 8. Installation

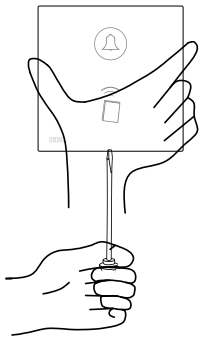


Figure 9. Disassembly

Technical Data

Basic Parameters

Working voltage	12~30V DC
Working current	45mA/24V DC
Supported card type	MIFARE ONE S50 13.56MHz
Communication	HDL Buspro

External Environment

Working temperature	-5°C~45°C
Working relative humidity	≤90%
Storage temperature	-20°C~60°C
Storage relative humidity	≤93%

Specifications

Dimensions	86×86×10.5 (mm)
Net weight	119g
Housing material	Glass
Installation	Wall box (See Figure 6 - 8)
Protection rating (Compliant with EN 60529)	IP20

Name and Content of Hazardous Substances in Products

Components	Hazardous substances					
	Lead (Pb)	Mercury (Hg)	Cadmium (Cd)	Chromium VI (Cr (VI))	Poly-brominated biphenyls (PBB)	Poly-brominated diphenyl ethers (PBDE)
Plastic	o	o	o	o	o	o
Hardware	o	o	o	o	-	-
Screw	o	o	o	x	-	-
Solder	x	o	o	o	-	-
PCB	x	o	o	o	o	o
IC	o	o	o	o	x	x
Glass	o	o	o	o	o	o

The symbol "-" indicates that the hazardous substance is not contained.

The symbol "o" indicates that the content of the hazardous substances in all the homogeneous materials of the component is below the limit requirement specified in the Standard IEC62321-2015.

The symbol "x" indicates that the content of the hazardous substance in at least one of the homogeneous materials of the part exceeds the limit requirement specified in the Standard IEC62321-2015.

HDL Buspro Cable Guide

HDL Buspro	HDL Buspro Cable	CAT5/CAT5E
DATA+	Yellow	Blue/Green
DATA-	White	Blue white/Green white
COM	Black	Brown white/Orange white
24V DC	Red	Brown/Orange

Technical support

E-mail: support@hdlautomation.com

Website: <https://www.hdlautomation.com>

©Copyright by HDL Automation Co., Ltd. All rights reserved.
Specifications subject to change without notice.